

M6

Intelligent
Microwave
Digestion System



M6

M6



PreeKem Scientific Instruments Co., Ltd.
No.100-101 Building, No.2338 Duhui Road, Shanghai, China
P.C.: 201108
Tel: 021-54427296 54426316 54426318
Fax: 021-54427063
E_mail: info@preekem.com
Web: www.preekem.com



What defines a lovable microwave digester?

Simplicity, convenience, and safety

Take on all sample types



Deliver economic value

Guaranteed user friendliness

- Pre-loaded digestion methods
- Intuitive software interface
- Convenient switch between rotors
- Multiple safety features in the hardware

Guaranteed digestion performance

- Complete solutions to samples of diverse background
- Precise dual temperature/pressure control
- Max batch time (including cooling) NMT 60 min

Guaranteed Return on Investment

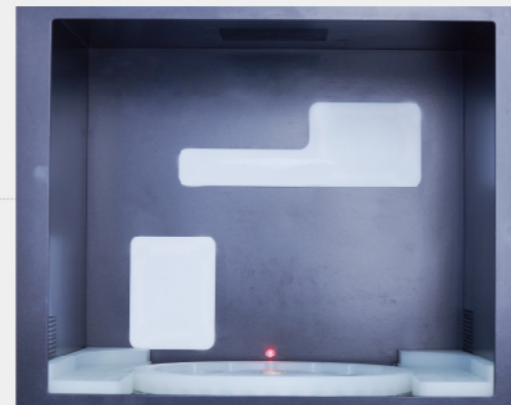
- Maximized sample throughput (160 per shift)
- Reduced average acid consumption
- Minimized consumables and extended vessel lifetime

M16

Oven Body

5-year Corrosion-free Warranty

- 316L Stainless Steel oven body construct
- Seamless Laser Soldering
- 5-Layer Premium Teflon Coating



Microwave Emitter

Proprietary Microwave Focusing

- Optimized dual-magnetron positioning
- Creative microwave guiding technology to streamline the energy density and distribution
- Delivers rapid, safe, and reproducible batch digestions for as many as 40 samples

Enhanced Safety Design

Buffered Safety Door Concept

- Floating Safety Lock
- Automatic depressurize and re-close
- Secure microwave emission upon fully closed door

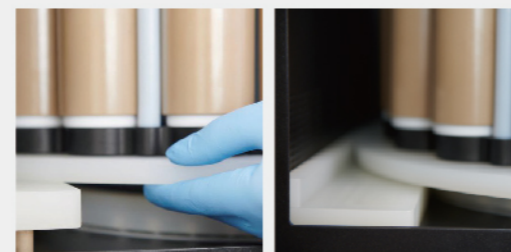


Microwave in action

Microwave paused

Vertical rotor release and engagement

- Rotor can be vertically raised or lowered by the motion of mechanically interlocked safety door
- Rotor handling greatly facilitated



Rotor raised when safety door is opened to a $\geq 90^\circ$

Rotor lowered when safety door is opened to a $< 90^\circ$

Microwave Digestion System

Smart status indicator

- Automatically adjusts the illuminance as the digestion status changes (standby – in progress – complete – standby)



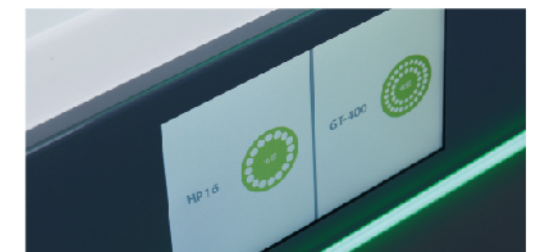
TwinAir technology - the art of cooling

- Rapid duo airway cooling
- Streamlined air passage
- Automatic airflow rate control
- Max 10 min to safe temperature



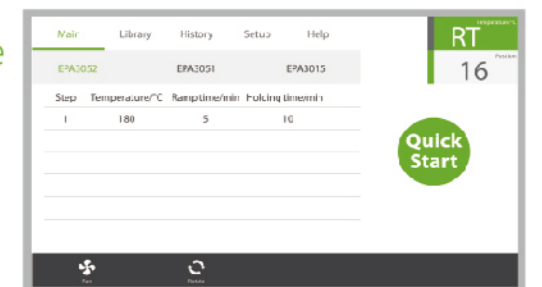
Automatic rotor identification

- Enabled by dual photoelectric sensors and high precision motor
- Vessels identified individually
- Intelligent method requisition based on rotor choices



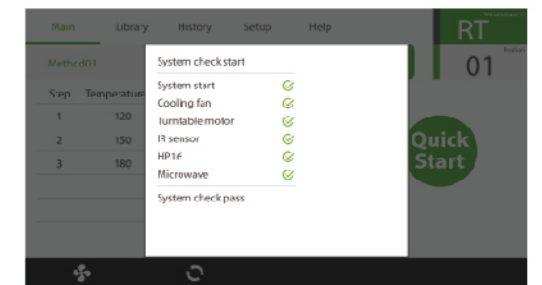
Hassel-free software interface

- Secured user access
- Simple method setup, edit, retrieval
- Fast track of three recent methods



Hardware initiation sequence

- Checking the general status of the hardware and readiness of key electronic components





Infrared Temperature Control

Rtemp Mid-IR Temperature Sensor

- Powerful and accurate temperature detection
- Instant temperature profiling of digestion process
- Operational convenience by contactless measurement

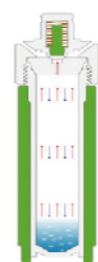


Rtemp Mid-IR sensor to provide real-time and full characterization of in-vessel temperature of the digestion process

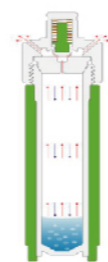
Precision of Pressure Control

Intelligent reaction vessel with Auto-Venting

- Patented self-regulating over-pressure management technology
- Ensures smooth reaction progress and safe vessel operation



Fully sealed



Venting in action

Easy vessel assembly

- Effortless vessel assembling without tools
- Batch and vessel numbers inscribed on inner vessels
- Hexagonal bottom design to enable easy vessel handling



High performance rotor HP16

- Greater temperature and pressure tolerance for tough sample matrices
- Max 16 samples in a single batch
- Powered by Rtemp Mid-IR technology
- Contactless and real-time T/P control in full vessel set



Rotor	HP16
No. of vessels	16
Vessel material	TFM
Protective sleeve material	Reinforced PEEK
Vessel volume	100mL
Max withstanding temperature	330°C
Max withstanding pressure	150bar

High throughput rotor GT400

- Max 40 samples in a single batch
- Powered by Rtemp Mid-IR technology
- Contactless and real-time T/P control in full vessel set



Rotor	GT-400
No. of vessels	40
Vessel material	TFM
Protective sleeve material	Reinforced PEEK
Vessel volume	60mL
Max withstanding temperature	330°C
Max withstanding pressure	120bar

Specifications

Touch screen	7" High def colour LCD
Microwave oven	Industrial grade resonance oven
Oven body	316L Stainless Steel
AC input	220-240V/50Hz, 16A
Total power	3200W
Microwave frequency	2450MHz
Microwave emission mode	Unpulsed, $\pm 1W$
Microwave control mode	PID control
Ambient temperature	5-40°C
Ambient humidity	15%-80%RH
Dimension of mainframe	665(H) \times 546(W) \times 590 (D) mm
Net weight	70Kg